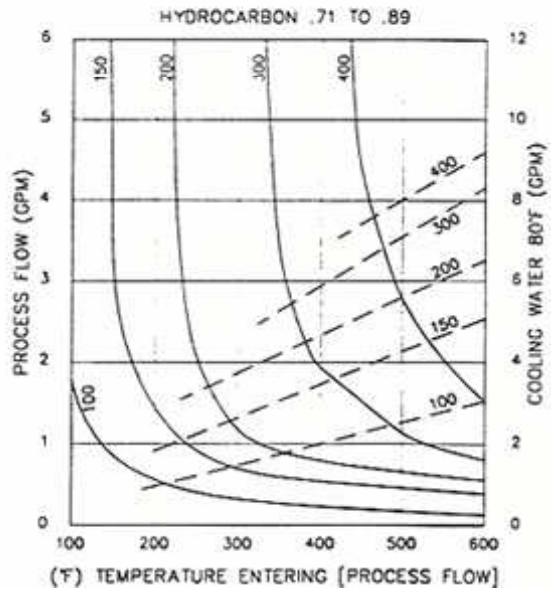
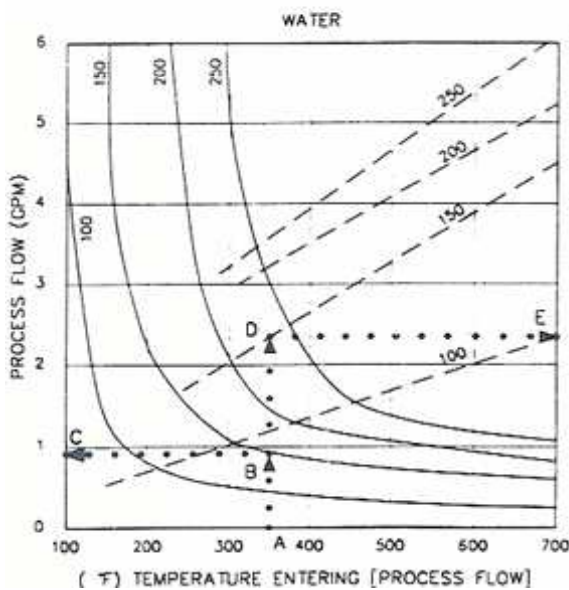
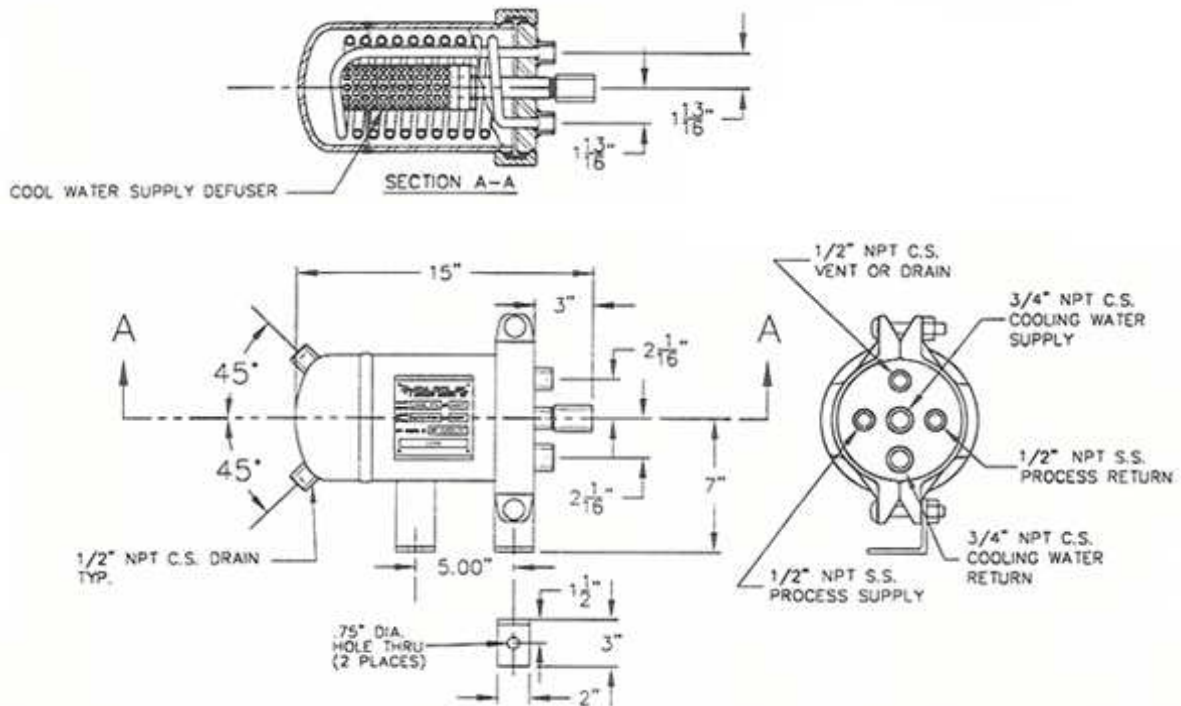


## MODEL H - 820 - R REMOVABLE HEAD WATER COOLED HEAT EXCHANGER



### **SPECIFICATIONS:**

<b>SHELL:</b>	<b>CARBON STEEL, 6" SCH. 40 SMLS</b>
<b>HEADS:</b>	<b>CARBON STEEL, 1" PLATE</b>
<b>MAX. ALLOW. WORKING PRESS.:</b>	<b>500 PSI @ 180°F</b>
<b>COILS:</b>	<b>316 STAINLESS STEEL</b>
<b>TUBE SIZE:</b>	<b>1/2" .065 WALL X 20' LONG</b>
<b>MAX. WORKING PRESSURE:</b>	<b>2000 PSI @ 400° F</b>
<b>COIL SURFACE AREA:</b>	<b>2.6 SQUARE FEET</b>