

PowerView™ - Model PV101-C Configuration Tool Version 3.2



Features

- Build custom configurations
- Easy-to-use Windows-based interface
- Add custom splash screens
- Tier 4 menu setup
- Add proprietary parameters
- Add supporting parameters outside SAE J1939 Parameters
- Add alternate languages
- Allows corrective action setup for DTCs
- Upload configurations from PV101-C to your PC
- Supports 10 languages including: English, Spanish, French, Italian, German, Russian, Chinese, Japanese, Brazilian Portuguese and Czech*
- Allows for proprietary OEM Menu Pass Code

The **PowerView Model PV101 Configuration Tool** is a PC-based configuration software for the PV101-C display. The configuration tool allows you to create custom configurations and upload them to the PV101-C without incurring engineering software development charges**.

The PV101-C Configuration Tool is an easy-to-use interface that enables you to modify features of the PV101-C including:

- Parameters - Allows users to create proprietary and supporting parameters and then add them to their configurations along with the SAE J1939 parameters.
- Diagnostic trouble codes (DTC) - Allows the user select and use DTCs as well as add custom corrective actions.
- Service reminders - Allows the user to set service reminders.
- Diesel particulate filter (DPF) - Allows users to modify messaging structure and icons.
- Modbus gauges - Allows users to use a proprietary PVA gage if setup in that portion of the configuration tool.
- Engine configuration - Allows user to add new parameters into the PV101 for viewing the configuration of the engine via SAE J1939 PGN 65251.***

NOTES:

* The configuration tool, itself, is only available in English; however, it supports all languages displayed in the PV101-C.

** If configurations are outside the scope of the configuration tool, contact Murphy for a quotation. Normal NRE charges shall apply.

*** If supported by engine manufacturer.

Configurable Display Parameters

Add custom and proprietary parameters to the robust Murphy standard configuration provided. The following are some of the engine and transmission parameters already displayed by the PowerView (when applicable, consult engine or transmission manufacturer for SAE J1939 supported parameters). The PowerView can display these parameters and more in all available languages, as well as in English or Metric units.

- Engine RPM
- Engine Hours
- Fuel Rate
- System Voltage
- % Engine Load at the Current RPM
- Coolant Temperature
- Catalyst Level
- Oil Pressure
- Fuel Economy
- Throttle Position
- Engine Manifold Air Temperature
- Current Fuel Consumption
- Transmission Oil Pressure
- NMEA 2000 GPS Parameters
- Transmission Oil Temperature
- Transmission Gear Position
- Active Service codes
- Stored Service Codes (when supported)
- View Engine Configuration Parameters (when supported)

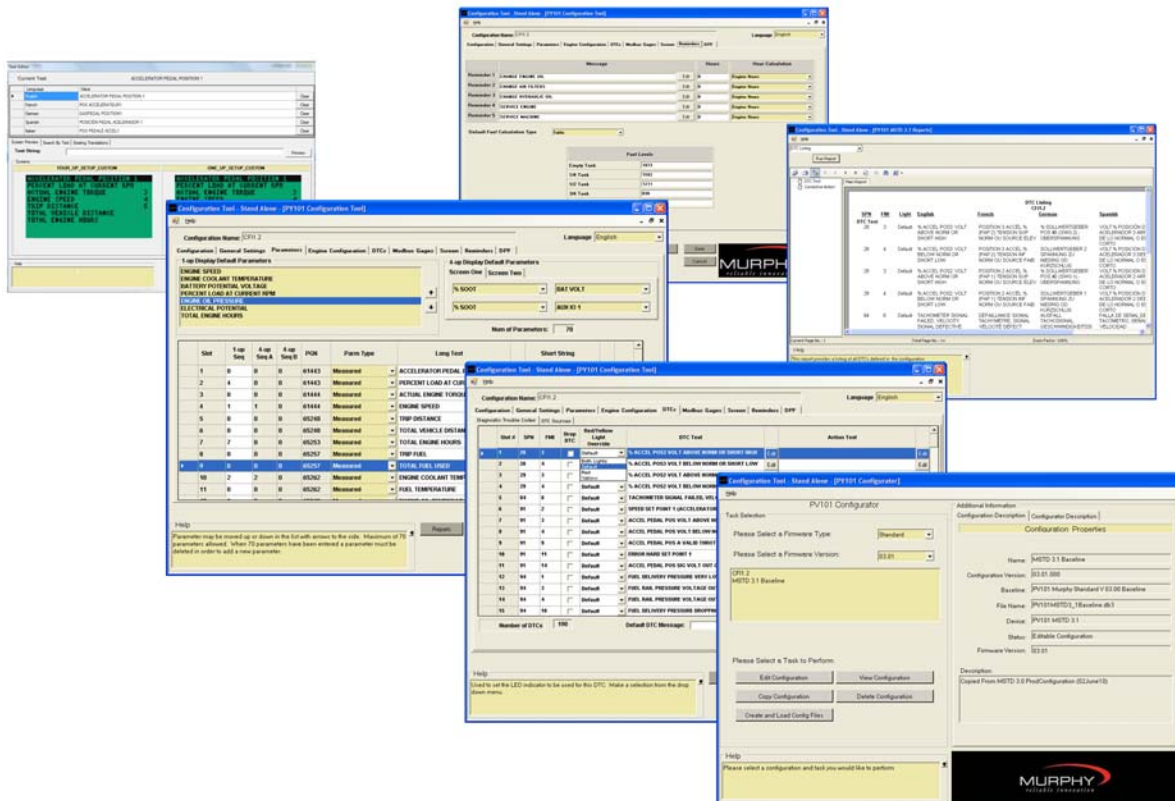
System Requirements

A USB 1.1 connection is required for transferring the configuration from PC to the PV 101.

While the configuration software will function on any PC or laptop running Windows, it will not perform transfers using the USB driver unless the operating system supports USB. USB supported operating systems include Win98SE, NT, XP, Vista and Windows 7.

The configuration software and USB driver provide efficient use of your hard drive, using only 3-5 MB of disk space after installation.

Example Screens



How to Order

P/N 78700435 - PV101-C Configuration Tool Kit

Shipping Weight: 2lbs (0.907kg)

Product Dimensions: 8-1/4" x 8-1/4" x 3-3/4" (210mm x 210mm x 96mm)

FW MURPHY
P.O. Box 470248
Tulsa, Oklahoma 74147 USA
Phone: +1 918 317 4100 Fax: +1 918 317 4266
E-mail: sales@fwmurphy.com

INDUSTRIAL PANEL DIVISION
Fax: +1 918 317 4124
E-mail: ipdsales@fwmurphy.com

MURPHY POWER IGNITION
Web site: www.murphy-pi.com

CONTROL SYSTEMS & SERVICES DIVISION
P.O. Box 1819
Rosenberg, Texas 77471 USA
Phone: +1 281 633 4500 Fax: +1 281 633 4588
E-mail: css-solutions@fwmurphy.com

FRANK W. MURPHY LTD.
Church Road, Laverstock
Salisbury, SP1 1QZ, UK
Phone: +44 1722 410055 Fax: +44 1722 410088
E-mail: sales@fwmurphy.co.uk
Web site: www.fwmurphy.co.uk

FW MURPHY INSTRUMENTS (HANGZHOU) CO., LTD.
77 23rd Street
Hangzhou Economic & Technological Development Area
Hangzhou, Zhejiang, 310018, China
Phone: +86 571 8788 6060 Fax: +86 571 8684 8878
E-mail: apsales@fwmurphy.com



COMPUTRONIC CONTROLS
41 - 46 Railway Terrace
Nechells, Birmingham, B7 5NG, UK
E-mail: sales@computroniccontrols.com
Web site: www.computroniccontrols.com



www.fwmurphy.com
05/05/2011